

AIR+PLUS

Air Conditioning Technologies



AIR+PLUS

Air Conditioning Technologies

Cell Type Aspirators:

- AP - EKO Economic Type
- AP - S Standard Type
- AP - EX Ex - Proof
- AP - M - Kitchen

83



AIR+PLUS

Air Conditioning Technologies



Plug & Play

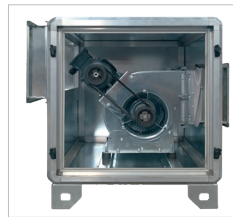
AP-EKO Economic Cell Type Aspirator

AP-EKO series cell type aspirators are manufactured as hermetic, high quality devices having low or high suction or blowing capacity in order to be used for cleaning or evacuating the ambient air in places where heating and cooling are not required. Places of usage; workplaces, offices, dining rooms, markets, restaurants, meeting rooms, shopping malls, hospitals, kitchens, industrial plants, banks, etc..

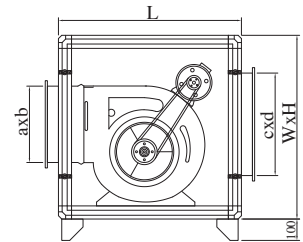
► Product Material

Casing of our economic cell type aspirators is manufactured from natural anodized aluminum profile and corner elements. Thickness of cell panel is 42 mm, outer wall is electrostatic powder coated and inner wall is manufactured from galvanized sheet. They are indispensable at central ventilation applications thanks to its insulated panels, frame structure, statically and dynamically balanced, quiet, efficient double inlet centrifugal fans. Our electrical motors are 380V-50Hz as the standard. In this series, double inlet centrifugal fans are used and electric motor is mounted over the fan. Optimum airflow rate and pressure values can be realized by adjusting fan speed by the means of belt and pulley system. All double walled panels are fixed to the frame by screws.

Standard maintenance and inspection doors have latch structure with compression feature that does not allow any air leakage. Under the cells, there are feet with 100 mm height made of 2 mm galvanized sheet. If the aspirator will be used for supplying fresh air, G3 or G4 filters can be added, depending on customer request.



MODEL	Air Flow (m³/h)	External Static Pressure (Pa)	Motor Power (kW-d/d)	Outside Dimensions (mm)			Suction Opening (mm)		Blowing Orifice (mm)	
				W	H	L	c	d	a	b
AP-EKO-A21	2100	300	0,75-1500	700	800	700	620	620	230	210
AP-EKO-A38	3800	300	1,1-1500	750	850	800	670	670	300	260
AP-EKO-A48	4800	300	1,5-1500	800	900	850	720	720	330	290
AP-EKO-A68	6800	400	2,2-1500	900	1000	950	820	820	400	340
AP-EKO-A96	9600	400	3-1500	1000	1100	1000	920	920	470	405
AP-EKO-A138	13800	400	4-1500	1150	1250	1200	1070	1070	570	480



AP-S Standard Cell Type Aspirator AP-EX Ex-Proof Cell Type Aspirators

► Product Material

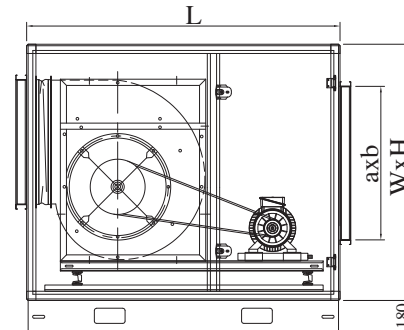
Casing of or cell type aspirators are manufactured from natural anodized aluminum profile and plastic corner elements. Thickness of cell panel is 42 mm, outer wall is electrostatic powder coated and inner wall is manufactured from galvanized sheet. It is indispensable for central ventilation applications due to its high efficient and energy saving 70 kg/m3 dense rock wool filled panels, modern casing structure, static and dynamic balance adjustment, silent, efficient double suction radial or optionally plug-in fans. Our standard electric motors are 380V-50 Hz. The fan-motor assembly used in our AP-S series standard cell type aspirators is housed in a vibration absorbing frame and the power transmission is provided by a belt-pulley assembly. Optimum airflow rate and pressure values can be realized by adjusting fan speed by the means of this system. All double walled panels are fixed to the frame by screws. Standard service

and inspection covers, air-handling unit lock with zero gap rigid hinges and which does not protrude inside the cell and which has compression feature that does not allow air leakage have double-walled and rigid structure so that the covers do not rub against frames. Under the cells, there are full-length frame feet with 180 mm height made of 2 mm galvanized sheet. There are eyebolts for crane transport and blade slots for forklift transport on the frame feet. If the aspirator will be used for supplying fresh air, coarse filters or compact filters can be added, depending on customer request. And in AP-EX series cell type aspirators, it is of ex-proof character, which prevents formation of sparks as a result of probable metal impacts between the rotor and the body thanks to the double suction radial fans, and the body suction cone made of copper. Our electric motors are of ex-proof character, and have 380V-50Hz rating.

► Usage Features

AP-S series standard cell type aspirators are used to freshen the ambient air in places where heating and cooling are not required. It is manufactured in high quality as hermetic and having lower or higher suction and blowing capacity according to the characteristic of the ambient air. Places of usage; workplaces, offices, dining rooms, markets, restaurants, meeting rooms, shopping malls, hospitals, kitchens, industrial plants, banks, etc.. AP-EX series cell type aspirators are used in applications such as petroleum chemicals, medication, paint, food, crude oil and natural gas transportation, which are among the leading sectors of industry. They are manufactured in the most correct protection class without compromising security by using ex-proof motor and fan considering existence of the explosive gases in this sector. Ex-proof motors and fans protect operating temperature as the ambient temperature rises.

The cell type aspirators with ex-proof motor and fan, which ensure the highest safety standards are designed to be operated safely in environments, in which explosive substances are found.



MODEL	Air Flowrate (m ³ /h)	Fan Model	Outside Dimensions (mm)			Suction Opening (mm)	
			W	H	L	a	b
AP-S-25	750 - 2500	7-7/200/225	700	700	800	620	250
AP-S-40	2500 - 4000	9-9/250/280	800	800	1000	720	300
AP-S-60	4000 - 6000	10-10/280/315	900	900	1100	820	400
AP-S-70	5000 - 7000	12-12/315/355	1000	1000	1200	920	450
AP-S-80	6000 - 8000	15-15/355/400	1100	1100	1300	1020	450
AP-S-100	8000 - 10000	18-13/355/400	1200	1200	1400	1120	500
AP-S-120	10000 - 12000	18-18/400/450	1200	1200	1400	1120	600
AP-S-150	12000 - 15000	18-18/450/500	1300	1300	1400	1220	650
AP-S-180	15000 - 18000	500/560	1400	1300	1500	1320	700
AP-S-250	20000 - 25000	560/630	1700	1500	1700	1620	800
AP-S-300	25000 - 40000	630/710	1700	1700	1900	1620	1300
AP-S-400	30000 - 40000	710/800	2200	2000	2200	2120	1000
AP-S-600	40000 - 60000	710/800/900	2600	2000	2300	2520	1300
AP-S-700	60000 - 70000	800/900	2600	2200	2300	2520	1500
AP-S-1000	70000 - 100000	900/1000	2600	2300	2400	2520	2100

AP-M Cell Type Kitchen Aspirator

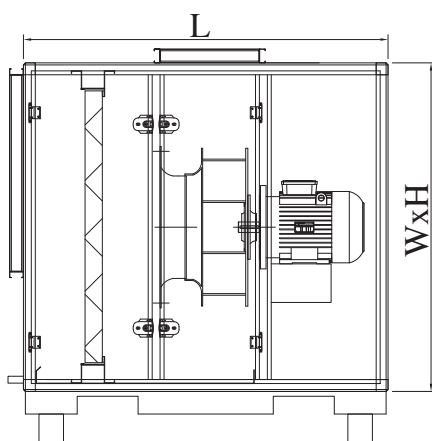
AP-M cell type kitchen aspirators are designed for exhausting hot, oily and humid air produced during cooking in industrial kitchens and cooking areas.

► Product Material

Casing of or cell type aspirators are manufactured from natural anodized aluminum profile and plastic corner elements. Thickness of cell panel is 42 mm, outer wall is electrostatic powder coated and inner wall is manufactured from galvanized sheet. They are indispensable for central ventilation applications due to its high efficient and energy saving 70 kg/m³ dense rock wool filled panels, modern casing structure, static and dynamic balance adjustment, silent, efficient plug-in fans. Our electrical motors are 380V-50Hz as the standard. In our AP-M series cell type kitchen aspirators, the electric motor section of the fan is insulated so that it will not be exposed to the air stream. Thanks to the oil trap filter at the inlet section, the kitchen aspirators trap the oil and soot particles in the inlet air, thus making sure cleaning the air to be expelled to the atmosphere. The drain pan and the drain outlet are available on the device as the standard, which are designed for the purpose of draining the oil and humidity that condensate thanks to the oil trap filter and the drainage duct as well as draining the water and chemical, which were used during chemical cleaning. Suitable to operate with the frequency inverter. All double walled panels are fixed to the frame by screws. Standard service and inspection covers, air-handling unit lock with zero gap rigid hinges and which does not protrude inside the cell and which has compression feature that does not allow air leakage have double-walled rigid structure so that the covers do not rub against frames. Under the cells, there are frame feet made of 2 mm thick galvanized sheet, and vibration damper plastics wedges beneath them. There are blade slots for forklift transport on the frame feet.



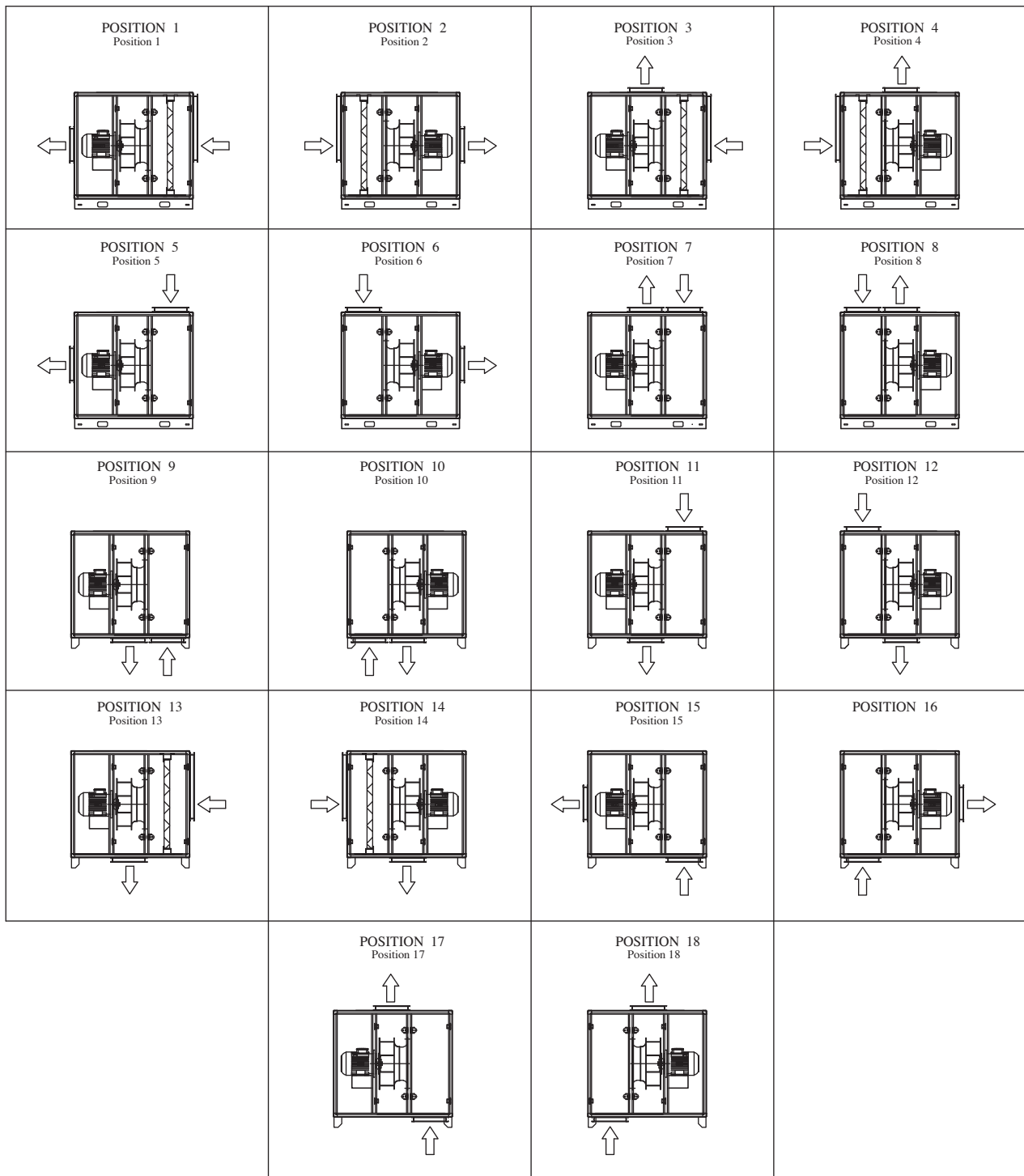
► Sizes and Capacities of AP-M Cell Type Aspirators



MODEL	Air Flow (m ³ /h)	External Static Pressure (Pa)	Filter	Motor Power (kW-d/d)	Outside Dimensions (mm)			Suction Opening (mm)		Blowing Orifice (mm)	
					W	H	L	c	d	a	b
AP-M-22	2200	200	Oil Tray Metal - Cassette	0,37-1500	750	850	1050	670	670	670	265
AP-M-33	3300	200	Oil Tray Metal - Cassette	0,55-1500	850	950	1100	770	770	770	290
AP-M-58	5800	200	Oil Tray Metal - Cassette	1,1-1500	1000	1100	1150	920	920	920	325
AP-M-80	8000	300	Oil Tray Metal - Cassette	2,2-1500	1050	1150	1250	970	970	970	355
AP-M-119	11900	400	Oil Tray Metal - Cassette	4-1500	1250	1350	1350	1170	1170	117	395
AP-M-142	14200	400	Oil Tray Metal - Cassette	5,5-1500	1250	1350	1500	1170	1170	1170	395
AP-M-172	17200	500	Oil Tray Metal - Cassette	7,5-1500	1300	1400	1550	1220	1220	1220	440
AP-M-206	20600	500	Oil Tray Metal - Cassette	7,5-1500	1300	1400	1600	1220	1220	1220	440
AP-M-260	26000	500	Oil Tray Metal - Cassette	11-1500	1500	1600	1750	1420	1420	1420	475
AP-M-314	31400	500	Oil Tray Metal - Cassette	15-1500	1500	1600	1850	1420	1420	1420	475

► Cell Type Aspirator Configuration Diagrams

Blowing and Suction Direction Selection Diagrams as Viewed from the Access Cover



Rev.08.19



AIR+PLUS

Air Conditioning Technologies

Airplus İklimlendirme Teknolojileri San. Tic. Ltd. Şti

Sırapınar Mah.Beykoz Cad.Çanakçı Dere Mevki
No:99-3 Çekmeköy - İstanbul

Tel : +90 (216) 420 65 58
Faks : +90 (216) 420 65 59

www.airplus.com.tr